

BEAUTIFUL SANTA CLARITA VALLEY, site of NEW EMBLEM HOMES, rich in California History, showing consistent growth since the turn of the century—from a mere 984 residents to a population of over 50,000 dwellers—presents investment opportunity as well as a beautiful place to live for the home buyer. Its growth pace has increased tremendously during recent years.

First recorded visitors were Franciscan Fathers who arrived in 1769 and later established the famed San Fernando Mission and set up the Rancho San Francisco land grant in what is now Castaic. General John C. Fremont passed through here on the march that led to California's eventual admittance to the Union. Gold was discovered at The Oak of the Golden Dreams in 1842, and oil production followed.

EMBLEM HOMES, INC., one of the largest and most active building organizations in Southern California—builders of New Emblem Santa Clarita Homes—recognized the potential of the area and the result is this development of luxury homes—at sensible, value-conscious prices.

More than 10,000 homes and apartment units have been built by EMBLEM HOMES, INC., and today stand as a tribute to the integrity of the firm and the customer satisfaction it has provided through the years. The proof of this will be evident as you inspect the beautifully furnished models.



A panoramic view reveals the exceptional beauty of the Santa Clarita Valley. Clarity of the mountains in the background is indicative of the Valley's crystal-clear air and marvelous climate.



PLANS, DRAWINGS AND DESIGNS
COPYRIGHT © L. C. MAJOR & ASSOCIATES, INC.



MODEL A1

Kitchens are brightened with cheerful luminous ceilings in all One story Designs. Family Room has a convenient built-in snack bar. Entry into the huge BONUS AREA for workshop, hobbies or play, is directly from the family room.

PLAN A

"La Hacienda"

ONE STORY • THREE BEDROOMS
TWO BATHS • FAMILY ROOM
AND HUGE BONUS AREA



MODEL A2

Living Room in Plan A boasts a massive fireplace with log lighter. Eight foot ceiling-height folding doors opening into spacious bedroom wardrobes, give easy access to the entire storage area. This innovation is found in ALL MODELS, along with huge walk-in closets, dressing areas with built-in vanities in many plans.



MODEL A3

This plan is highlighted by its customized beauty, Mexican Colonial design. Attractive porch with wide overhang and generous eaves, gives entry through impressive double doors into a large entry hall.





MODEL B1

Emblem Homes feature an unusual quality of Vinyl by Kentile in the Kitchen, Bathroom and Entry. Beautiful wood grain tile is used throughout other rooms in all models.

PLAN B

"The Pickwick"

ONE STORY • FOUR BEDROOM
TWO BATH DESIGN
WITH FAMILY ROOM



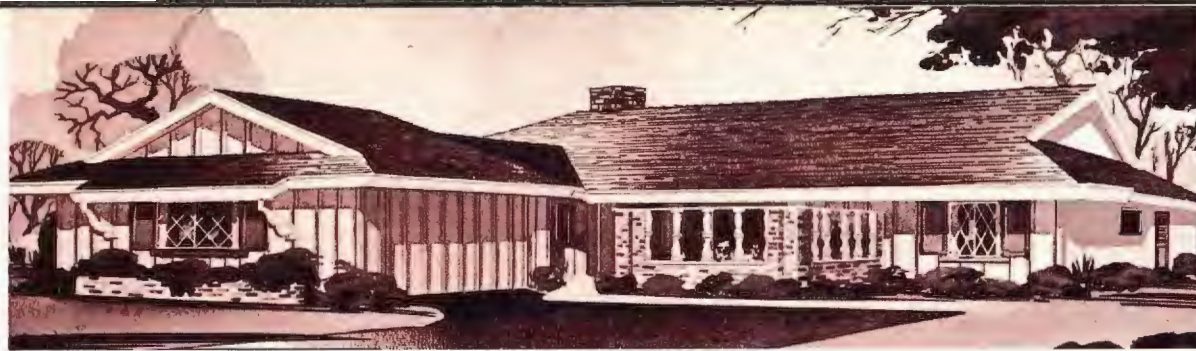
MODEL B2

This plan offers a large and distinctive Entry Court which can be landscaped to achieve an outstanding effect. The HUGE BONUS AREA found in this model is standard in ALL MODELS.

MODEL B3

The Living Room in this spacious design features a distinctive fireplace. Family Room has convenient built-in breakfast bar and sliding glass door leading to the garden area. The Master Bedroom with adjacent compartmented Master Bath, offers a huge walk-in closet with built-in "mirror-over" vanity and full door plate glass mirror.





MODEL C1

*Extensive ornamentation of Used Brick—unusual artistic Used Brick
Front Patio Wall with turned posts, combine with
Deep Roof Overhangs to give the exterior of this model a look of distinction.*

PLAN C

"The Californian"

ONE STORY • FOUR BEDROOM

TWO BATHS

SPACIOUS FAMILY ROOM

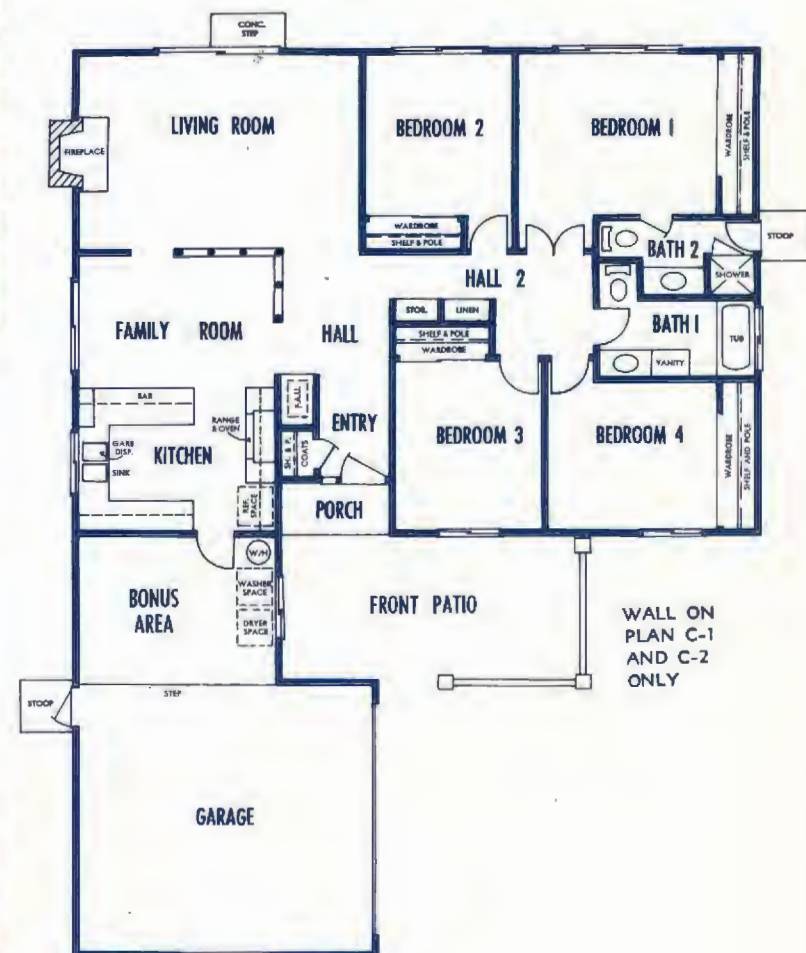


MODEL C2

*Sliding Glass Wall leads from the Living Room to the rear patio area.
Spacious Family Room boasts a convenient eating bar.
Luxurious Master Bedroom with adjacent Master Bath features
a separate outside door leading from the Bath to outside garden area.*

MODEL C3

*Model C3 presents a sleek, streamlined exterior, ornamented with
stone and unique wood trim. Luminous Ceiling presents a bright,
cheerful Kitchen that delights the lady of the house. As in all
Santa Clarita Homes, the Huge Bonus Area promises a family fun center.*



PLAN D

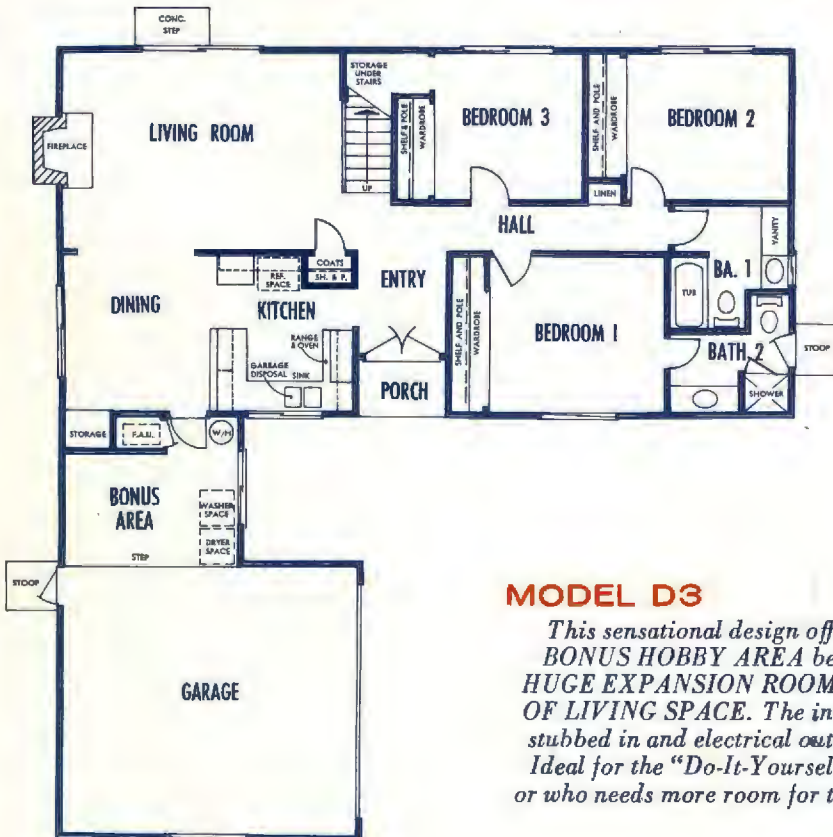
"La Grande"

TWO STORY
THREE BEDROOM
TWO BATH DESIGN
WITH DINING ROOM



MODEL D1

The upstairs "Expansion Room" in this design offers facilities for a large 4th Bedroom with Dressing Area and a 3rd Bath, PLUS a huge area for a Recreation Room.



MODEL D2

Living Room with distinctive fireplace and sliding glass door to the garden area, is obscured from the Kitchen in this design and in ALL EMBLEM MODELS.

Bath #2, as in several other plans, has a separate outside entrance, allowing the kiddies to clean up before entering the rest of the house.

MODEL D3

This sensational design offers complete luxury living downstairs PLUS the BONUS HOBBY AREA between the house and garage. UPSTAIRS... the HUGE EXPANSION ROOM... A SURPRISE EXTRA! 697 SQUARE FEET OF LIVING SPACE. The interior is left uncompleted but with rough plumbing stubbed in and electrical outlets too! IT'S YOUR "FUTURE 2nd FLOOR"... Ideal for the "Do-It-Yourself" to complete the family's expansion as needed, or who needs more room for that second floor at far less than "add-a-room" costs.





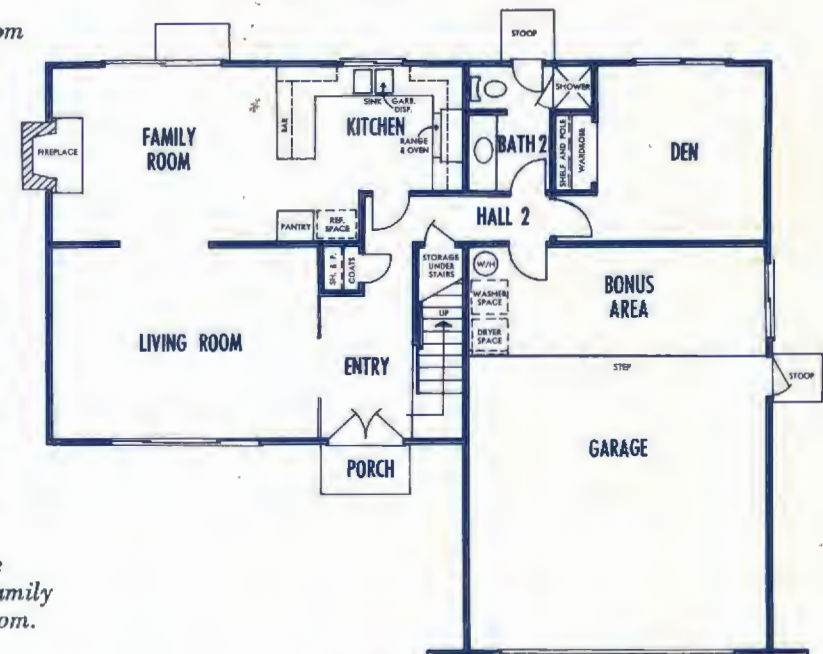
MODEL E1

Downstairs Den is adjacent to Bath #2 and may serve as a 4th Bedroom if desired. Deluxe Price-Pfister "Contessa Line" Plumbing Fittings are used in lavatories of all New Emblem Homes.

PLAN E

"La Granada"

TWO STORY
THREE BEDROOMS
PLUS DEN AND
FAMILY ROOM



MODEL E2

Imagine the joy of living in such a spacious two story home with the added advantage of a huge BONUS AREA where every member of the family can enjoy a hobby or activity from workshop to sewing room to playroom.

MODEL E3

This is the prize English Tudor design . . . spacious and luxurious interior decor. Large separate Family Room has a Built-in Snack Bar and cheerful Fireplace. Elegant Master Bedroom and Bath Suite features Large Dressing Area—Built-in Vanity—Cultured Marble Pullman Top with Oval Basin.





AIR CONDITIONING INCLUDED

Complete summer comfort insurance is provided in ALL NEW EMBLEM Santa Clarita Homes by 4500-5500 CFM EVAPORATIVE COOLERS for that cool, calm and collected feeling.

GENERAL FEATURES

- 15 Exciting Elevations—5 Basic Floor Plans
- Exteriors Beautifully Customized—Liberal use of brick, stone, wood and wrought iron for added beauty
- Dramatic Double Doors with Decorative Escutcheons
- Attractive Porches with Generous Eaves and Wide Overhangs
- Lumber—Superior to Code Requirements—All Built to Highest Standard of L. A. County and FHA Inspection
- Entry Hall Floors of Unusual Quality Vinyl by KENTILE
- 4500-5500 CFM Evaporative Coolers in All Models
- Master Key Protection by KWIK SET—No Master Key Will Fit Locks . . . Only YOURS
- Weatherstripping on All Exterior Doors & Thresholds
- Insulation in All Attic Spaces and Ceilings
- GAFFERS & SATTTLER Forced Air Heating
- Anodized Aluminum Frames—All Windows, Sliding Doors and Screens
- PRICE-PFISTER Plumbing Fittings—Cast-Iron Tubs
- HUGE BONUS AREA—All Models
- CUSTOM LIGHTING FIXTURES

KITCHEN FEATURES

- GAFFERS & SATTTLER 36" Built-In 4-Burner Gas Range
- Separate Broiler—Full 20" Oven
- BALBOA Range Hood with Fan and Separate Light
- Kitchen Floors of Unusual Vinyl by KENTILE
- Color Coordination by Mel Grau Co.
- Kitchen and Bar Counter Tops of GENUINE CERAMIC TILE (no scorching from hot pots and pans)
- Cheery LUMINOUS KITCHEN CEILINGS (One Story Models)
- Built-in Cabinets of Ash—Raised Paneling on Doors and Drawers
- Separate Kitchen Pantry or Storage Closet in several models
- GAFFERS & SATTTLER Garbage Disposer

LIVING ROOM-FAMILY ROOM-DINING ROOM FEATURES

- Floors of Beautiful Wood Grain Tile by KENTILE in Living Room, Family Room, Dining Room and Bedrooms—ALL MODELS
- Natural Brick Pattern Tile in Entry & Kitchen Floor (Optional in All Plans)
- Sliding Glass Door to Garden area from Living or Family Room
- Distinctive FIREPLACES with LOG LIGHTERS—ALL MODELS
- Generous Storage and Linen Closets—ALL MODELS
- Living Room Obscured From Kitchen In All Plans

BEDROOM & BATH FEATURES

- *Sensational Ceiling-Height Bedroom Wardrobes with Folding Doors. This gives you easy access to another full length shelf . . . and it's in every wardrobe closet! Just think how much extra storage this means to you!*
- Huge Walk-In Closets in several plans
- Liberal Use of Plate Glass Mirrors
- FULL DOOR PLATE GLASS MIRROR in Master Bedrooms, all plans
- Large Dressing Rooms with Built-In "Mirror-Over" Vanities In Master Bedroom Suites Some Plans
- Glass Enclosed Showers (all plans) and Glass Door Enclosure Over-Tub Shower (in "E" plan)
- GENUINE CERAMIC TILE in Stall Showers and Showers Over Tuhs
- Pullman Tops Of Cultured Marble (stain and ring resistant)
- "Contessa Line" Lavatory Fittings by PRICE-PFISTER
- Handles of Long Lasting Lucite with Cut Crystal Brilliance
- Separate Outside Bathroom Door in Most Plans
- KENTILE Bathroom Floors of Top Quality Vinyl
- Oval Lavatories—Long Lasting Cast-Iron Tubs

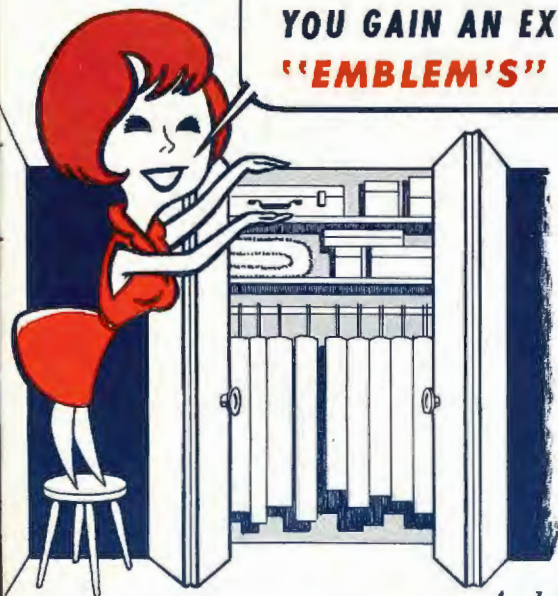
**GENUINE
CERAMIC
TILE**



Titles insured by
Title Insurance and Trust Co.

In keeping with the policy of New Emblem Santa Clarita Homes to always seek newly developed and improved products and techniques, the right of change and/or substitution is reserved.

**YOU GAIN AN EXTRA SHELF THAT YOU CAN USE WITH
"EMBLEM'S" FLOOR-TO-CEILING WARDROBE FOLDING DOORS!**



BIG BONUS HOBBY AREA!

The feature that every family longs for and usually has to add-a-room to acquire . . .

THE BIG BONUS AREA that is standard in all NEW EMBLEM HOMES!

Mother wants a sewing room . . . Father wants a work shop . . . Junior is a slot car fan . . . Sister wants a place to practice dancing . . . the family wants a photo dark room

. . . THE SPACE IS THERE, waiting the family's pleasure!

Do with it what you will, and whatever you do is bound to be fun!

And for a DOUBLE BONUS FEATURE . . . consider the fabulous innovation found in Plan D. A HUGE "EXPANSION" ROOM . . . you have an entire 2nd floor "Expansion Room" . . . already enclosed ALLOWING YOU TO BE THE BUILDER and finish according to your heart's desire! Do-it-yourself . . . OR have it done, BUT the major construction has been accomplished FOR you!

Rough plumbing is stubbed in and awaiting your decision to create the upstairs you've always wanted such as a HUGE RECREATION ROOM PLUS 4th BEDROOM and 3rd BATH or a 4th and 5th BEDROOM and 3rd BATH! Plus electrical outlets! It's YOUR CHOICE and 697 SQUARE FEET OF LIVING SPACE to do it in! Most families either "add-a-room" or move to a larger home later.

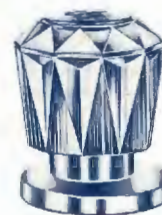
Yours is already added . . . you finish to satisfy your particular needs.

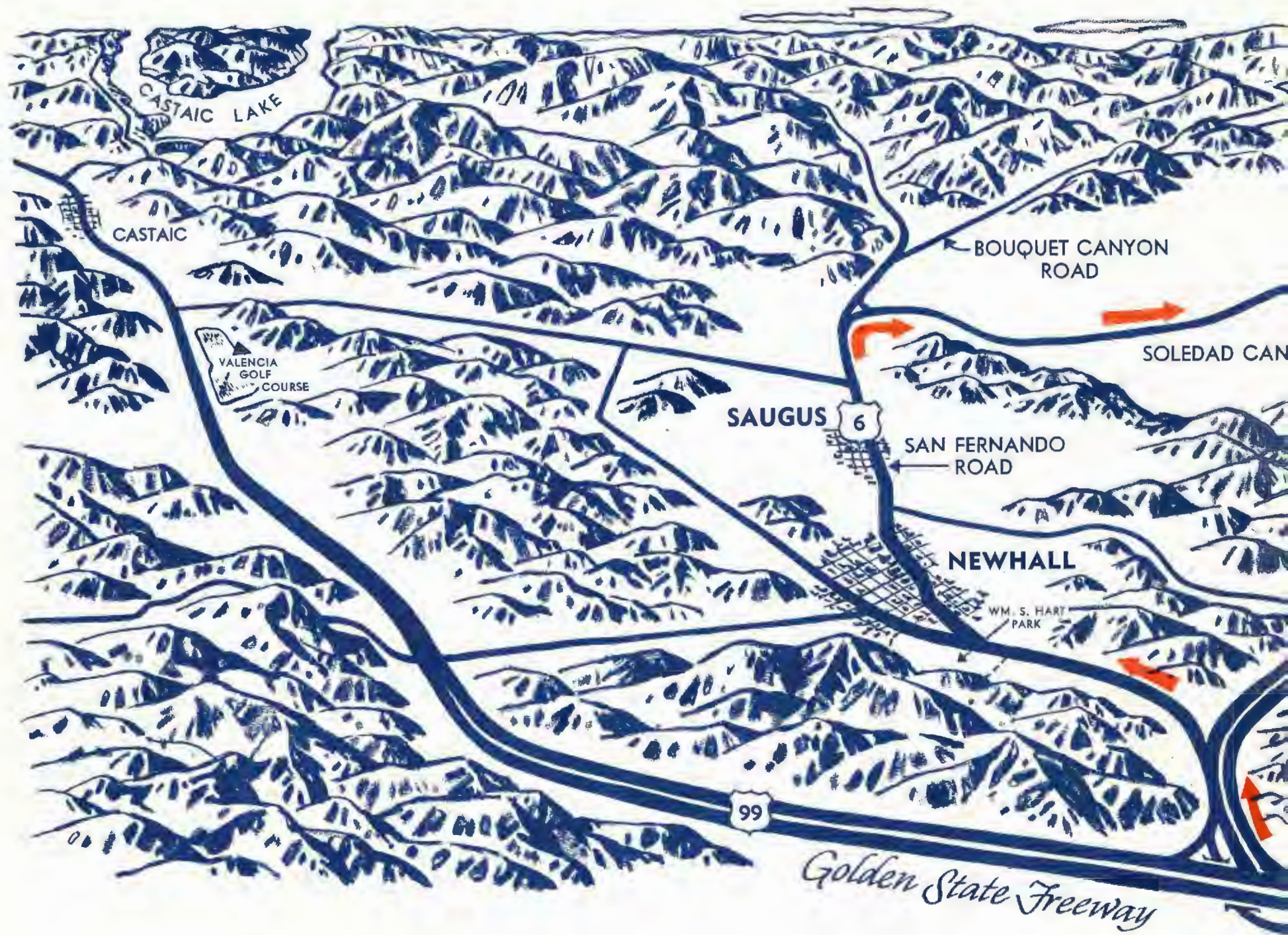
"Contessa" Bath Fixtures by Price Pfister

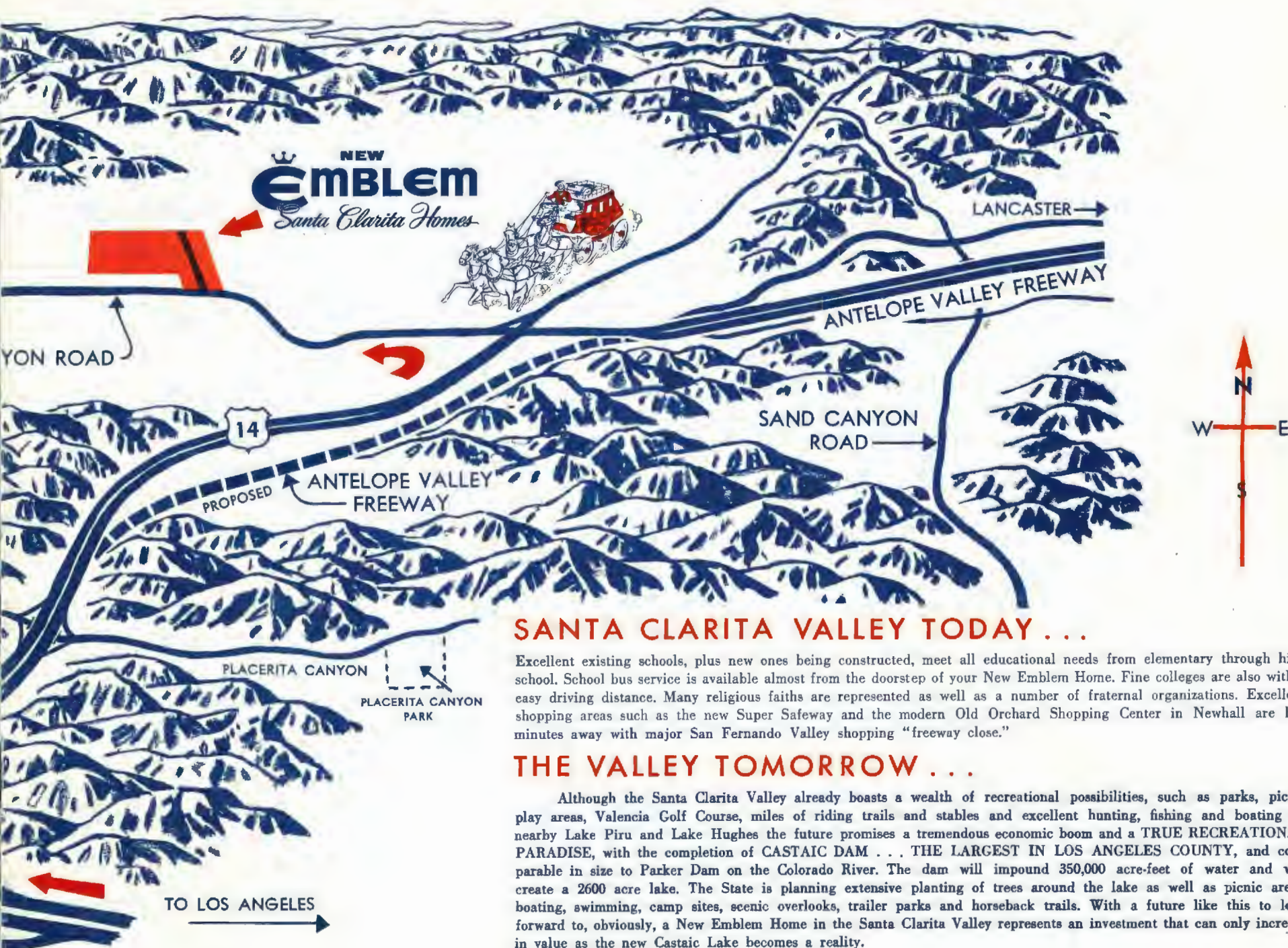
NEW

Emblem

Santa Clarita Homes







SANTA CLARITA VALLEY TODAY . . .

Excellent existing schools, plus new ones being constructed, meet all educational needs from elementary through high school. School bus service is available almost from the doorstep of your New Emblem Home. Fine colleges are also within easy driving distance. Many religious faiths are represented as well as a number of fraternal organizations. Excellent shopping areas such as the new Super Safeway and the modern Old Orchard Shopping Center in Newhall are but minutes away with major San Fernando Valley shopping "freeway close."

THE VALLEY TOMORROW . . .

Although the Santa Clarita Valley already boasts a wealth of recreational possibilities, such as parks, picnic play areas, Valencia Golf Course, miles of riding trails and stables and excellent hunting, fishing and boating on nearby Lake Piru and Lake Hughes the future promises a tremendous economic boom and a TRUE RECREATIONAL PARADISE, with the completion of CASTAIC DAM . . . THE LARGEST IN LOS ANGELES COUNTY, and comparable in size to Parker Dam on the Colorado River. The dam will impound 350,000 acre-feet of water and will create a 2600 acre lake. The State is planning extensive planting of trees around the lake as well as picnic areas, boating, swimming, camp sites, scenic overlooks, trailer parks and horseback trails. With a future like this to look forward to, obviously, a New Emblem Home in the Santa Clarita Valley represents an investment that can only increase in value as the new Castaic Lake becomes a reality.