

409 SAMUELS SPRING COURT
SILVER SPRING, MARYLAND 20905

\$899,900



Built-In: 2004 **Lot Size:** 15,292 SF **Subdivision:** Ashton Preserve
Estimated property tax and non-tax charges in the first fiscal year of ownership is \$9,129.

The John Burgess Group of Realty Executives Premier is proud to present this stately four bedroom, four full and one half bath brick-front colonial located in the picturesque community of Ashton Preserve. It is situated on a scenic and professionally landscaped lot backing to a 10-acre park-protected lot. This spectacular home features a grand two-story foyer entry, formal living & dining rooms with floor-to-ceiling windows, study with custom built-in shelving, and a spacious kitchen with granite counter tops, center island, built-in desk, second stairway to upper level & sliders to rear deck. Enjoy outdoor living in the custom, enclosed, screened porch with Brazilian Ipe hardwood floor & skylights or on the lighted deck with stairs to flagstone patio. The features of this fine property continue with a family room with new carpet, fireplace, built-in cabinets, surround sound, French door to deck & cathedral ceiling, master bedroom suite with a super master bathroom and walk-out lower level with an expansive recreation room, office and full bath. Also included are refinished hardwood floors, new carpet throughout, ceramic tile, decorative trim & molding, custom paint, cathedral ceilings, attached two-car garage and the list goes on. For a Visual Tour and Property Disclosures visit www.JohnBurgessRealtor.com.



3919 National Drive Suite 310 - Burtonsville, MD 20866
Office: 301-681-5093 - Fax: 301-681-5094
Info@JohnBurgessRealtor.com - www.JohnBurgessRealtor.com

If you have a brokerage relationship with another agency, this is not intended as a solicitation.
All information deemed reliable but not guaranteed.



FOR INSTANT PHOTOS AND DETAILS

TEXT 635440
TO 855-981-7253



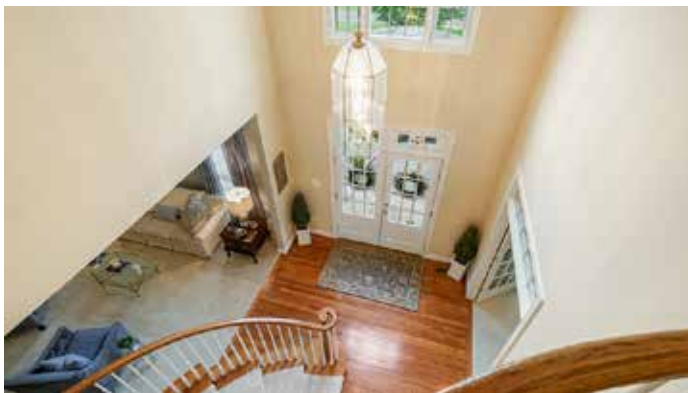
409 SAMUELS SPRING COURT

Main Level

- Grand two-story foyer entry with 12-lite French doors & transom, crown molding, chandelier, coat closet, hardwood stairs with new carpet to upper level
- Study/office with new carpet, custom-built cherrywood cabinet, recessed lighting
- Living room with new carpet, crown molding, floor-to-ceiling windows, columned entry to dining room
- Dining room with new carpet, crown molding, chair rail, picture frame millwork, chandelier with ceiling medallion, floor-to-ceiling windows
- Eat-in kitchen with hardwood floors, island/breakfast bar with gas cook-top & storage space, granite countertops, recessed lighting, pendant lighting, cabinets with crown molding, under-cabinet lighting, double wall oven, new Samsung French door refrigerator with ice maker/dispenser, dishwasher, stainless steel double sink & faucet, pantry, built-in desk, open to family room, second stairway to upper level, sliders to rear deck
- Family room with new carpet, cathedral ceiling, ceiling fan, brick fireplace with mantel & roughed-in for gas, custom-built cabinets with granite tops & glass doors, custom raised-panel millwork, surround sound, recessed lighting, French door to deck
- Laundry room with new ceramic tile floor, newer LG top-load washer & dryer, utility sink, exit to two-car garage
- Powder room with hardwood floors, recessed lighting

Upper Level

- Master bedroom suite with French door entry, new carpet, tray ceiling, ceiling fan, two walk-in closets
- Master bath with ceramic tile floor, plantation shutters, garden soaking tub, separate private shower, private commode, dual vanity, linen closet
- Bedroom #2 with new carpet, ceiling fan, access to Jack & Jill bath
- Jack & Jill full bath with double vanity, private shower & commode, plantation shutters
- Bedroom #3 with new carpet, access to Jack & Jill bath
- Bedroom #4 with new carpet and full bath with ceramic tile, tub/shower, plantation shutters
- Hallway with new carpet, crown molding, chair rail, recessed lighting, linen closet



Lower Level

- Rec room with new berber carpeting, recessed lighting, French door to rear patio
- Potential bedroom #5 or in-law suite with new berber carpeting, recessed lighting
- Full bath with ceramic tile floor
- Closet with built-in shelving
- Large, unfinished storage area with utility sink, work bench

Special Features

- Flagstone walkway • Pre-wired for landscape lighting & hot tub • Screened-in porch with Brazilian Ipe hardwood floor & skylights • Rear deck with lighting, stairs to flagstone patio with knee wall
- Six-car driveway • Two-car garage
- Professionally landscaped • Covered front porch
- Invisible fence • Security system
- Surround sound in family room and deck area
- Refinished hardwood floors • New carpet throughout
- Ceramic tile • Freshly painted in 2016
- New Samsung refrigerator • LG Washer/Dryer - 2 years • New architectural shingle roof • Custom cabinets • Custom raised-panel millwork • French doors • Brick fireplace with mantel & roughed-in for gas • Cathedral ceiling • Tray ceiling • 17' ceilings
- Under-cabinet lighting • Backs to 10-acre private property protected by Sandy Spring Park